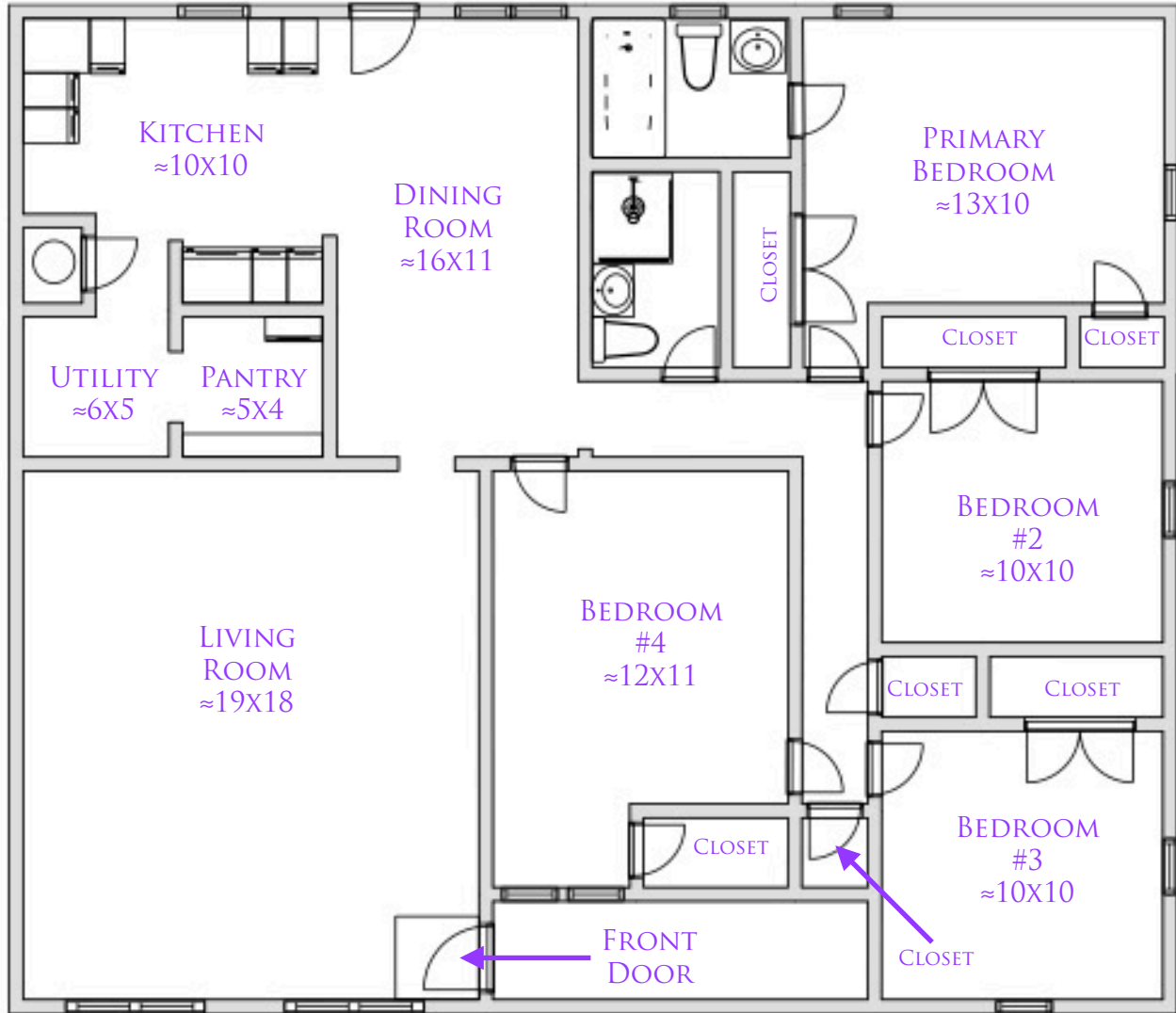


12112 EUNICE ST, FARMERS BRANCH, TEXAS 75234



1,781SF/TAX

4 BEDROOMS - 2 FULL BATHROOMS
LIVING ROOM - DINING AREA
LARGE BACKYARD
64X125 LOT (.183 ACRE)/TAX

Whilst every attempt has been made to ensure the accuracy of the floor plan contained here, all measurements and features are approximate and no responsibility is taken for any error, omission, or mis-statement. This floor plan is for illustrative purposes only and should not be relied upon.

The information contained herein is furnished by the owner to the best of his/her knowledge, but is subject to verification by the purchaser, and agent assumes no responsibility for the correctness thereof. The sale offering is made subject to errors, omissions, change of price, prior sale, or withdrawal without notice. In accordance with the Law, this property is offered without respect to race, color, creed, national origin, sex, familial status or disability.