



www.RAYMONDLEON.COM

717 CORNER POST PATH CELINA, TEXAS 75009 \$450,000

RAYMOND LEON & Associatessm



Open Floor Plan



Upgraded & Open Kitchen



Open Dining Area to Kitchen & Patio



Double Gas Fireplace & Open Living



Breakfast Bar for Entertaining & Dining



Spacious Outdoor Covered Patio



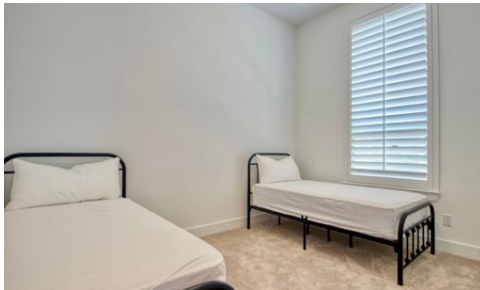
Spacious & Extended Primary Suite



Neutral Primary Bath with Quartz Counters



Fourth Bedroom or Study



Second Bedroom



Full Second Bathroom



Third Bedroom



FIVE STAR PROFESSIONAL
TEXAS MONTHLY
D Magazine **D**
BEST & Top Producer

AMERICA'S TOP 100 - TOP 1%



CEO, Broker & Realtor[®]
Historic House Specialist

DIRECT: (214)502-9852
OFFICE & FAX: (214)520-4443
RAYMACH@RAYMONDLEON.COM

RAYMOND LEON
& Associatessm



Spacious Backyard with
Approximately 29 Feet of Depth



The information contained herein is furnished by the owner to the best of his/her knowledge, but is subject to verification by the purchaser, and agent assumes no responsibility for the correctness thereof. The sale offering is made subject to errors, omissions, change of price, prior sale, or withdrawal without notice. In accordance with the Law, this property is offered without respect to race, color, creed, national origin, sex, familial status or disability. This is not intended to solicit property currently listed. All information to be verified by Purchaser prior to closing.